

Installation Manual

FT-RC-AUD10

REV 080617

FAAFTECH
LIMITLESS TECHNOLOGY

PRESENTATION

- Congratulations for purchasing the video interface FT-RC-AUD10.
- Please, read this manual with attention before installing your new device.
- Keep this manual with you to check the functioning procedures and the security information.
- We recommend that a professional, with experience in the field of installation of vehicle devices, is the one to install this interface.
- The car ignition must be off during the entire installation process.

CHARACTERISTICS

- Enables 1 rear camera input
- Enables 1 front camera input
- Enables 1 auxiliary video input
- Dynamic parking lines
- 12V output to power the accessories
- Plug and Play Connections
- 1-year warranty against manufacturer defect
- Compatible vehicles: www.faafttech.com/produtos/interface-de-video/ft-rc-aud10

INSTALLING

Follow the steps below to install the FT-RC-AUD10 interface:

1st Remove the original radio and the steering wheel's column finish to install the interface;

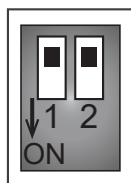
2nd Setup the interface's DIP Switches according to the chart on "DIP SWITCHES" section;

3rd Connect the whips according to the "CONNECTIONS" section;

4th Install the rear camera(s) and/or front camera according to the chart on the "VIDEO CONNECTIONS" section.

DIP SWITCHES

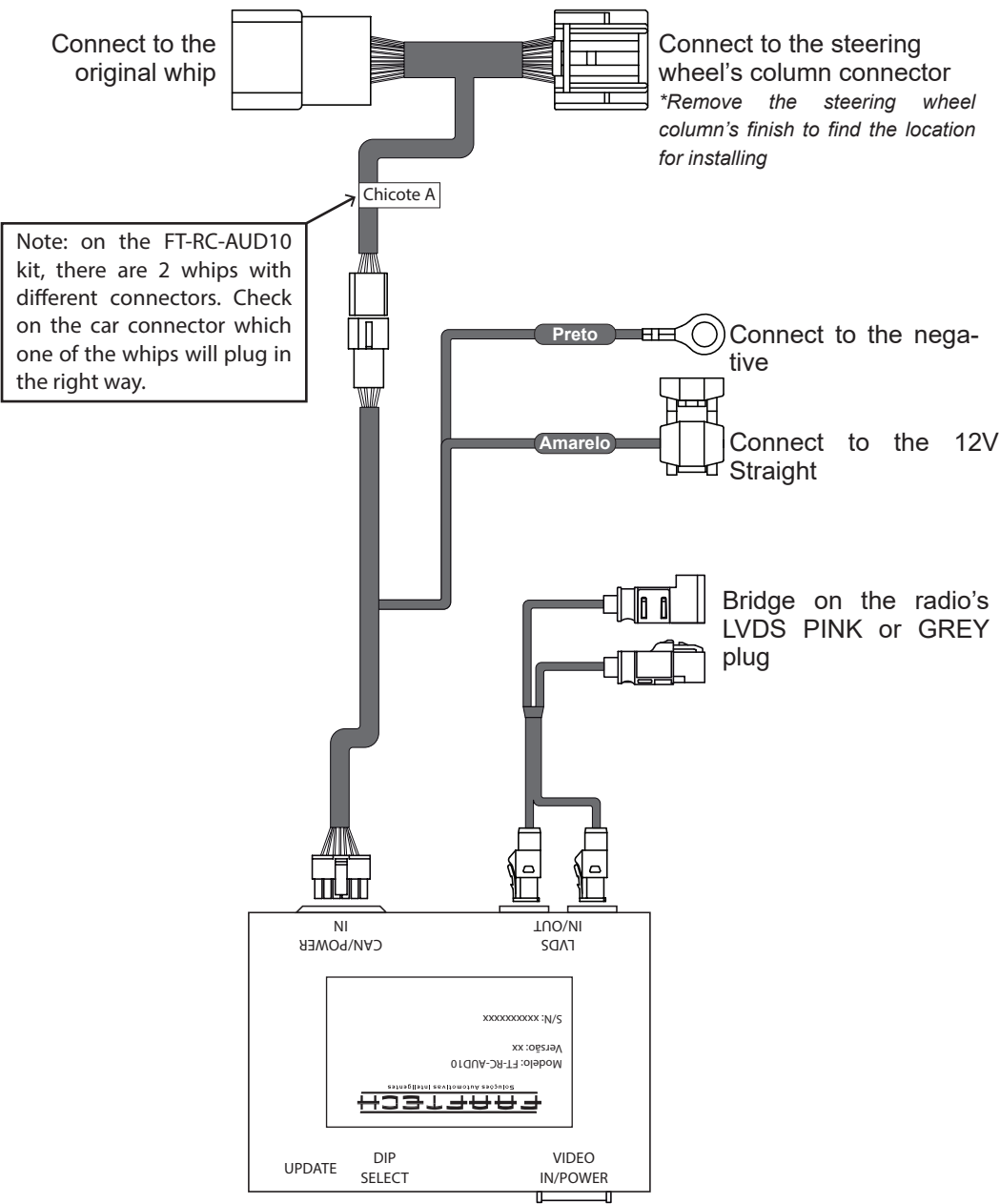
Setup the interface's DIP Switches while the device is disconnected from the whip and the car ignition is off.

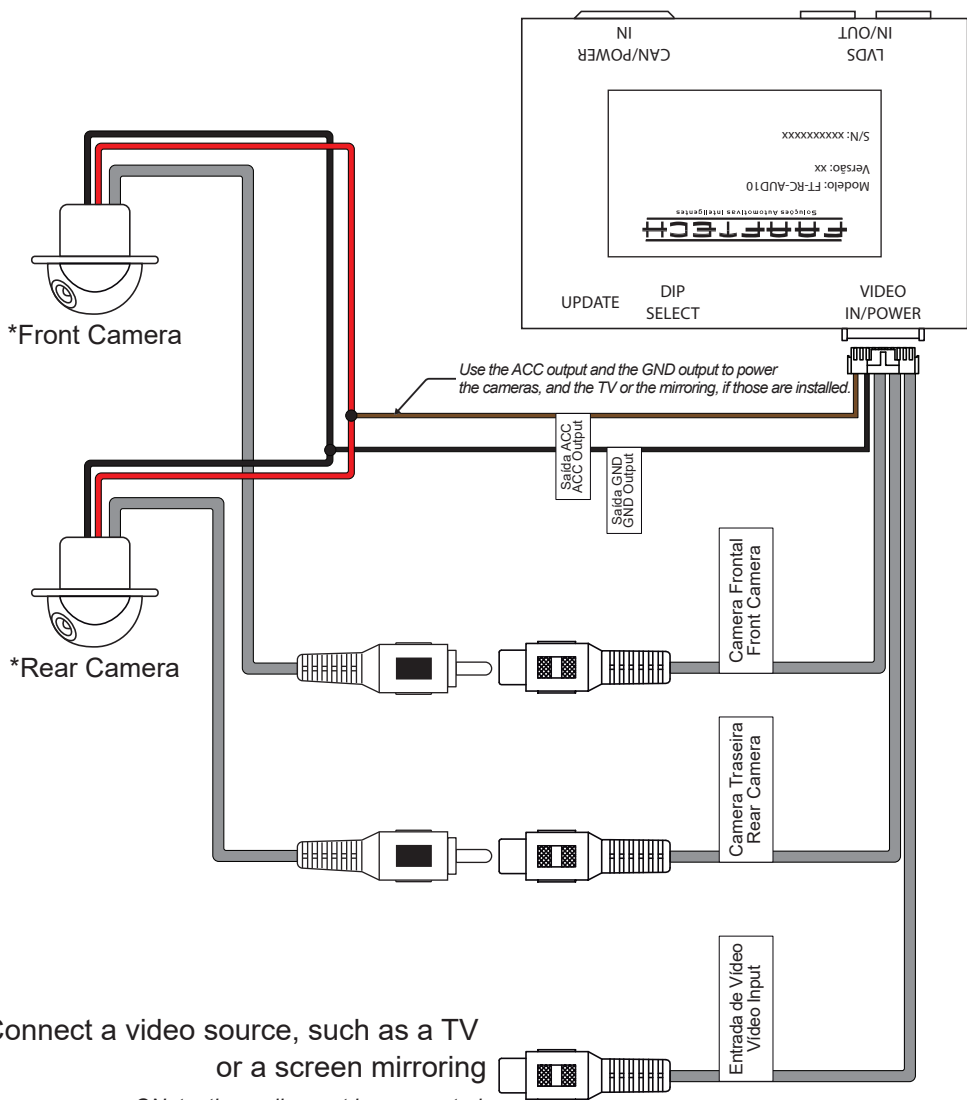


SETUP DIP SWITCHES

DIP 1	UP enables front camera DOWN disables front camera
DIP 2	UP for cars with a 7" or an 8" screen DOWN for cars with a 5,8" screen

CONNECTIONS





Connect a video source, such as a TV
or a screen mirroring

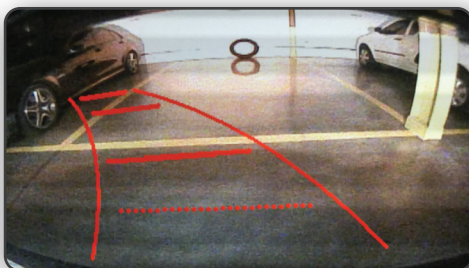
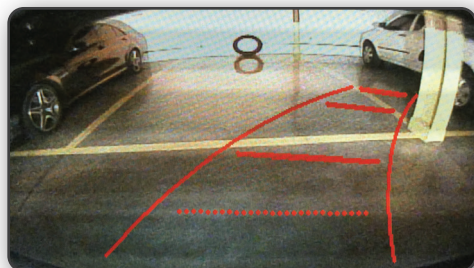
*ONote: the audio must be connected
directly to the multimedia auxiliary entry*

*Cameras sold separately.

Rear Camera

Once you put your vehicle on reverse, the rear camera will automatically show on the screen.

As you spin the steering wheel, the parking lines will move, showing the vehicle's approximate direction as you keep going.



Important Notice:

The parking lines do not offer 100% precision on the track they show. Use them only as an auxiliary resource as you park your vehicle.

Front Camera

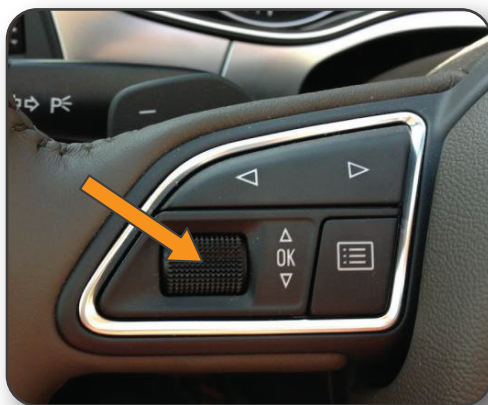
When you put the car on reverse, then switch the gear to N or D, the front camera will automatically appear on the screen. The camera will remain turned on for 30 seconds, or until the car reaches the speed of 15 km/h (9.32 mph) or if you press the **OK** button on the steering wheel (see image of the OK button on the next page).



ACCESSING THE AV INPUTS

Follow the steps bellow to access the interface's AV entry:

- Select the AUX audio source from the multimedia;
- Press and hold the OK button on the steering wheel to gain access to the interface's AV mode;
- If you have installed a front camera, simply click the OK button to alter between the AV input view and the front camera;
- Press and hold the OK button on the steering wheel to return to the original menu.



**OK button
on the steering wheel**



TECHNICAL SUPPORT

+55 0800 603 2330 or +55 62 3241 4600

suporte@faaftech.com.br

www.faaftech.com.br

Available from Monday to Friday, from 8 a.m. to 6 p.m. Brasilia time

Follow us on social media

