

# *Installation Manual*

# FT-RC-MB15

REV 080617

**FAAFTECH**  
LIMITLESS TECHNOLOGY

## PRESENTATION

- Congratulations for purchasing the video interface FT-RC-AUD10.
- Please, read this manual with attention before installing your new device.
- Keep this manual with you to check the functioning procedures and the security information.
- We recommend that a professional, with experience in the field of installation of vehicle devices, is the one to install this interface.
- The car ignition must be off during the entire installation process.

## CHARACTERISTICS

- Enables 1 rear camera input
- Enables 1 front camera input
- Enables 1 auxiliary video input
- Dynamic parking lines
- 12V output to power the accessories
- Plug and Play Connections
- 1-year warranty against manufacturer defect
- Compatible vehicles: [www.faaftech.com/produtos/interface-de-video/ft-rc-mb15](http://www.faaftech.com/produtos/interface-de-video/ft-rc-mb15)

## INSTALLING

Follow the steps below to install the FT-RC-AUD10 interface:

1st Remove the original radio to install the interface;

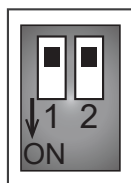
2nd Setup the interface's DIP Switches according to the chart on "DIP SWITCHES" section;

3rd Connect the whips according to the "CONNECTIONS" section;

4th Install the rear camera(s) and/or front camera according to the chart on the "VIDEO CONNECTIONS" section.

## DIP SWITCHES

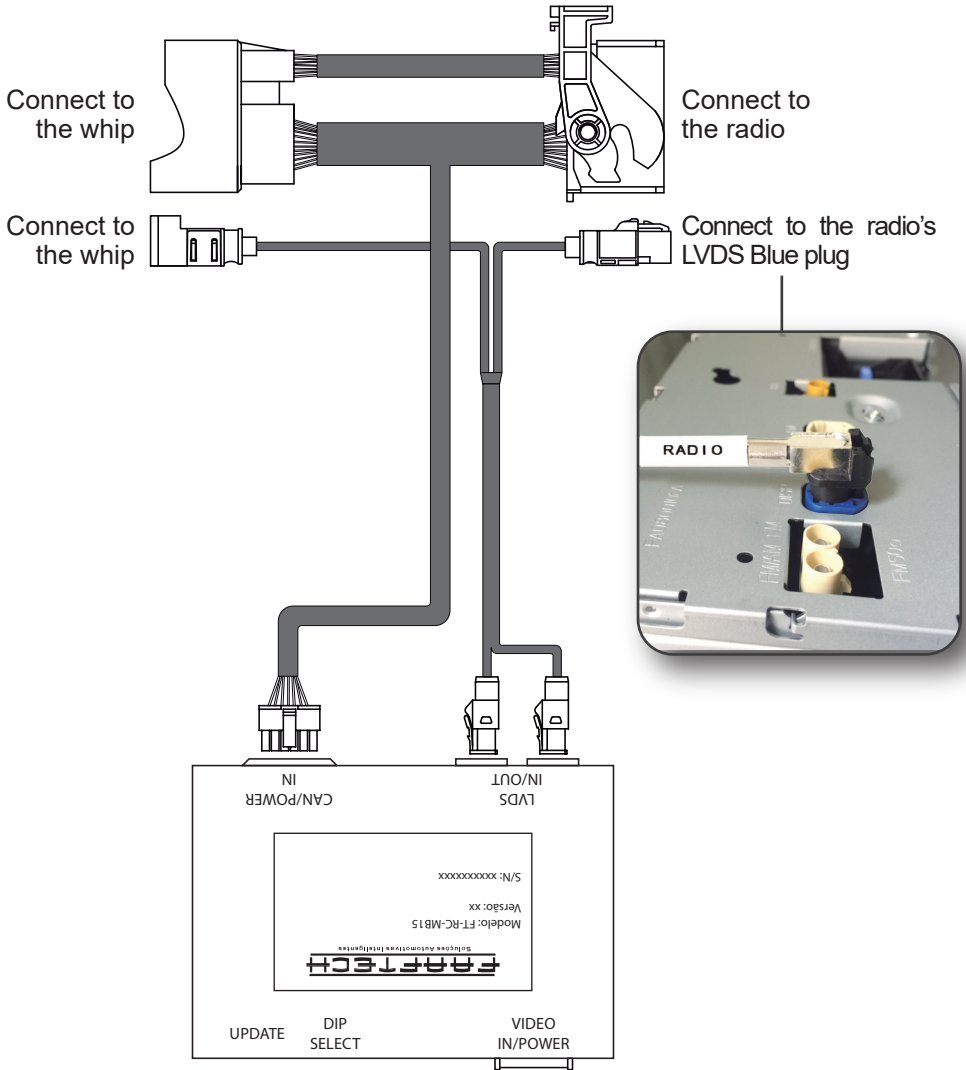
Setup the interface's DIP Switches while the device is disconnected from the whip and the car ignition is off.



### SETUP DIP SWITCHES

DIP 1	UP enables front camera DOWN disables front camera
DIP 2	UP for cars with an 8" screen DOWN for cars with a 7" screen

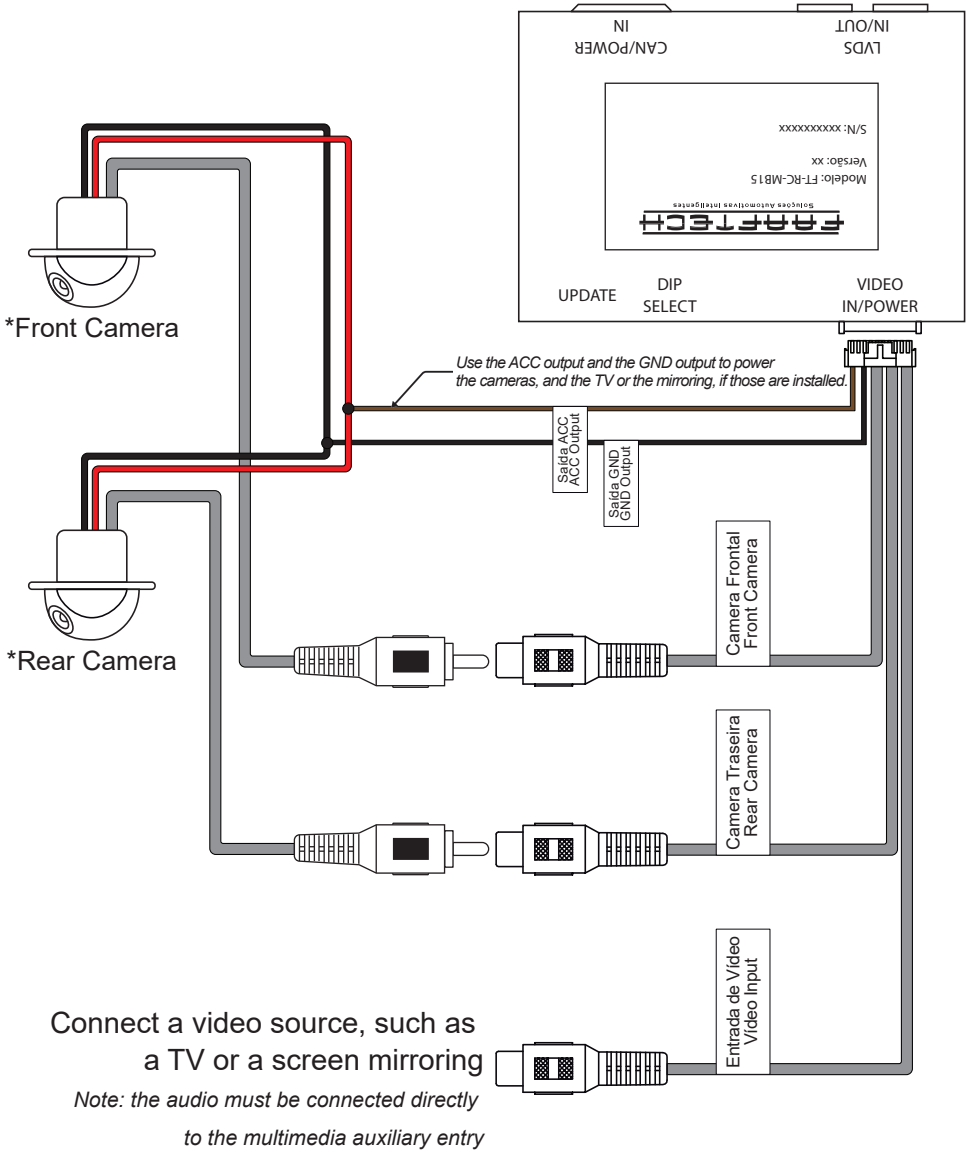
## CONNECTIONS



### Important Notice

*Check on the car's original Quadlock connector if there is an Optic Fiber cable. If there is, you will need to remove it from the original connector and connect it to the interface's Quadlock, which will then be connected to the radio.*

# VIDEO CONNECTIONS

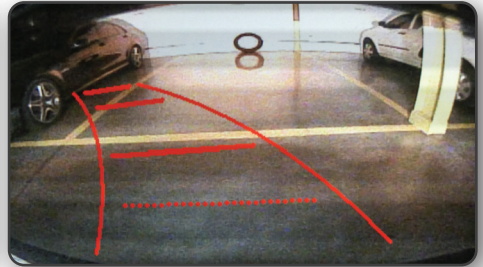
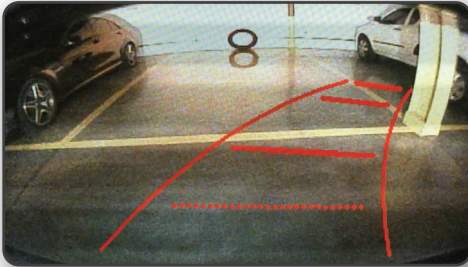


\*Cameras sold separately.

## Rear Camera

Once you put your vehicle on reverse, the rear camera will automatically show on the screen.

As you spin the steering wheel, the parking lines will move, showing the vehicle's approximate direction as you keep going.

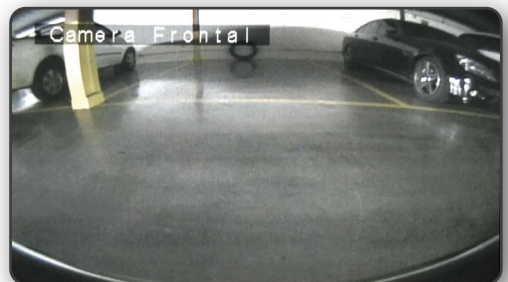


Important Notice:

*The parking lines do not offer 100% precision on the track they show. Use them only as an auxiliary resource as you park your vehicle.*

## Front Camera

When you put the car on reverse, then switch the gear to N or D, the front camera will automatically appear on the screen. The camera will remain turned on for 30 seconds, or until the car reaches the speed of 15 km/h (9.32 mph) or if you press the **BACK** button on the steering wheel (see image of the **BACK** button on the next page).



## ACCESSING THE AV INPUTS

Follow the steps bellow to access the interface's AV entry:

- Select the auxiliary audio source from the multimedia;
- Press and hold the BACK button on the steering wheel to gain access to the interface's AV mode;
- If you have installed a front camera, simply touch the BACK button to alter between the AV input view and the front camera;
- Press and hold the BACK button on the steering wheel to return to the original menu.



**BACK button  
on the steering wheel**

# FAAFTECH

LIMITLESS TECHNOLOGY

## TECHNICAL SUPPORT

+55 0800 603 2330 or +55 62 3241 4600

[suporte@faaftech.com.br](mailto:suporte@faaftech.com.br)

[www.faaftech.com.br](http://www.faaftech.com.br)

Available from Monday to Friday, from 8 a.m. to 6 p.m. Brasilia time

Follow us on social media

